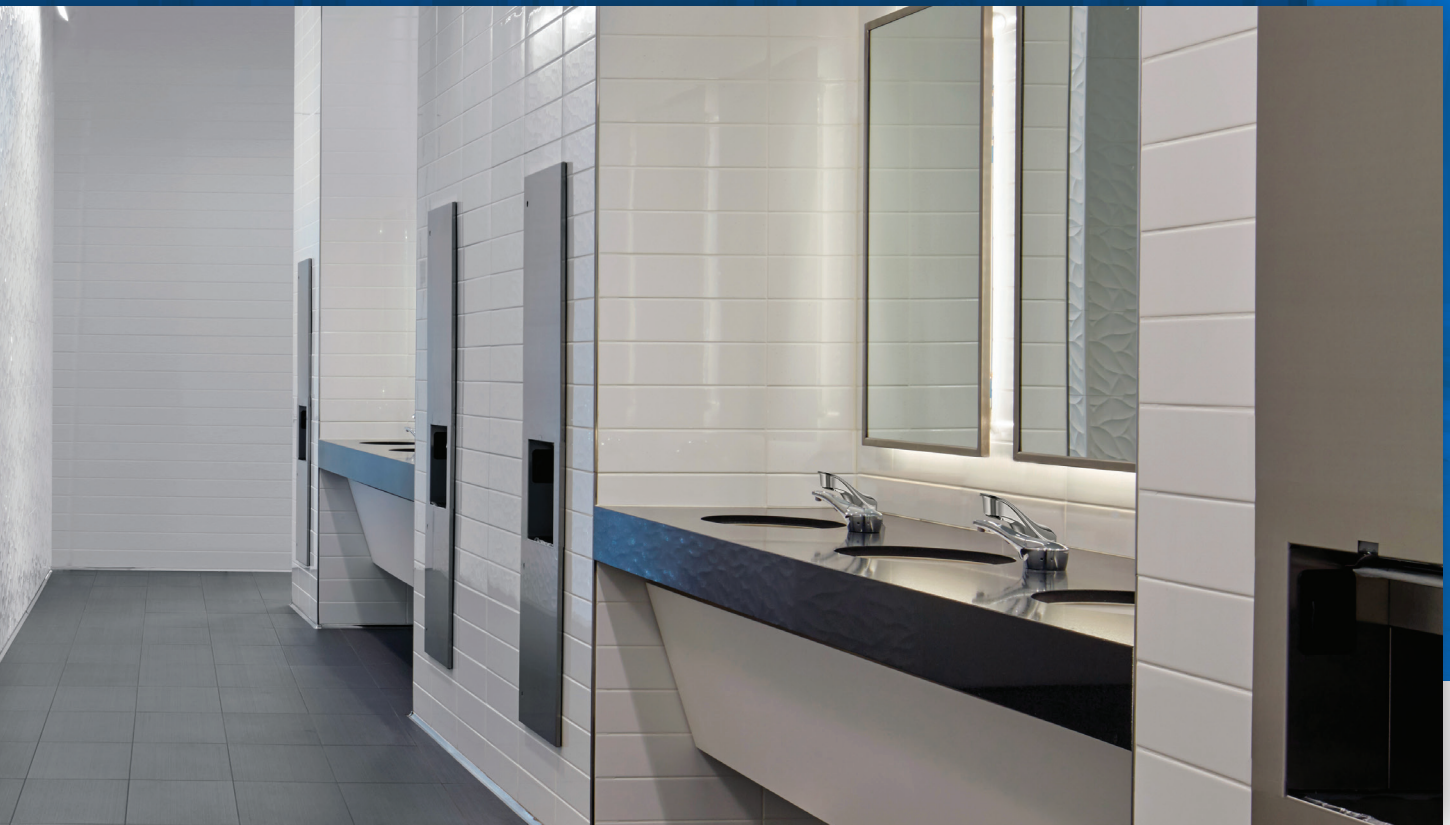


# DISTINCTIVE DESIGN IDEAS

Aesthetics and accommodation for superior washrooms



DESIGN

HYGIENIC

**BOBRICK**

BUILDING VALUE SINCE 1906



# DESIGN EXCELLENCE. THROUGHOUT THE RESTROOM.

## Aesthetics & Accommodation

Washroom expectations are evolving. Are you responding with distinctive solutions? Bobrick is proud to offer a range of thoughtfully designed amenities to satisfy the various considerations your projects require, anywhere in the washroom.

## CONTENTS

- 3..... Klutch Mobile Device Holder
- 4..... LED Mirrors
- 5..... Designer Series Soap Dispensers
- 6..... Colored TrimLineSeries™ Accessories
- 7..... Thoughtful Accommodations



### AESTHETICS

Design standards are changing. Boilerplate restrooms are often no longer sufficient. Surpass typical aesthetics with distinctive products.

#### Challenge

#### Solutions

<b>Style</b>	B-635 Klutch Mobile Device Holder
	B-164 Backlit LED Mirrors
	Designer Series Soap Dispensers
<b>Colour</b>	Designer Series Soap Dispensers
	Coloured TrimLineSeries™ Accessories
<b>Light</b>	B-164 Backlit LED Mirrors



### ACCOMMODATION

Society is evolving. In the restroom, it's about more than just function—are you ensuring that all patrons feel welcome and accommodated?

#### Challenge

#### Solutions

<b>Amenity</b>	Koala Kare Baby Changing Stations
	B-635 Klutch Mobile Device Holder
<b>Hygiene</b>	Designer Series Soap Dispensers
	B-3725 Accessible Recessed Hand Dryer
<b>Comfort</b>	B-635 Klutch Mobile Device Holder
	B-3725 Hands-in Recessed Hand Dryer

## Optimal Building Types



Class-A Offices



High-End Restaurants



Hotel Lobbies





Sleek, stainless steel design complements modern décor

Patented pivoting cradle "Klutches" electronic devices



B-635

Klutch provides a safe place to store smartphones, tablets, laptops and more.

**See it in Action!**

Scan the QR code below to watch the product video.



## B-635 KLUTCH MOBILE DEVICE HOLDER

A UNIQUE SOLUTION FOR MODERN TRENDS

### Keep Mobile Devices Safe & Secure

Studies suggest that up to 75 percent of Americans use their phones in the restroom. To meet the challenges of the modern restroom without compromising aesthetics, Bobrick's new, patented B-635 Klutch Mobile Device Holder keeps phones and mobile devices safe and secure. Patented.

### Features & Benefits

- **Convenient Design:** Sleek, compact design "Klutches" mobile devices for safety and fits with any décor. ADA compliant, requiring no grasping or twisting to use.
- **Practical & Versatile:** Easily installed in toilet compartments, common spaces or private areas where storage is desired. Integrated bag hook holds up to 300 lbs and can accommodate multiple items.

**Grand Prize Winner**  
Product Innovations 2019  
Presented by *BUILDINGS*



**Winner**  
Product Innovation Awards 2019  
Presented by *Architectural Products*



Energy-efficient operation with 50,000 hours of estimated life ...

Improved illumination and reduced shadowing with integrated dimming option



## B-164 SERIES LED MIRRORS

### Reflect Quality, Value & Style

Bobrick's LED Mirror Collection combines high quality LEDs with commercial grade mirror construction to provide a product that reflects quality, value and style.

### Features & Benefits

- **Environmentally Friendly:** Energy-efficient, with 50,000 hours of estimated life and integrated dimming option.
- **Resilient:** Lead-free silver backing exceeds ISO 9227:2012, 120-hour corrosion testing; mirror and mounting frame are IP44 rated for damp applications.



### B-164 Backlit Series Standard Sizes

Model	W	D	Lumens
B-164 2436	24"	36"	2,500
B-164 2442	24"	42"	2,900





Top filling saves labour with oversized fill port designed for economical non-proprietary jug soap

# DESIGNER SERIES SOAP DISPENSERS

## Elegant Design. Cost-Saving Operation.

Complete your counter design with a soap dispenser that is just as stylish as it is smart. Designer Series Soap Dispensers adapt to your design vision while delivering significant savings. Patented.

## Features & Benefits

- **No-Touch Operation:** Fibre optic sensor ensures precise dispensing and reduces false activation.
- **Sustainable:** Top-fill with non-proprietary bulk soap for significant cost-in-use savings; portion control dial optimises consumption.

Polished Brass and Matte Black have minimum quantity requirements and longer lead times. Please contact customer service for more information.

## Designer Series Finishes



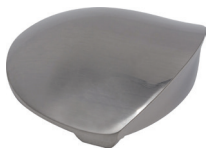
**Polished Chrome**  
Soap Dispenser: B-858



**Polished Brass**  
Soap Dispenser: B-850



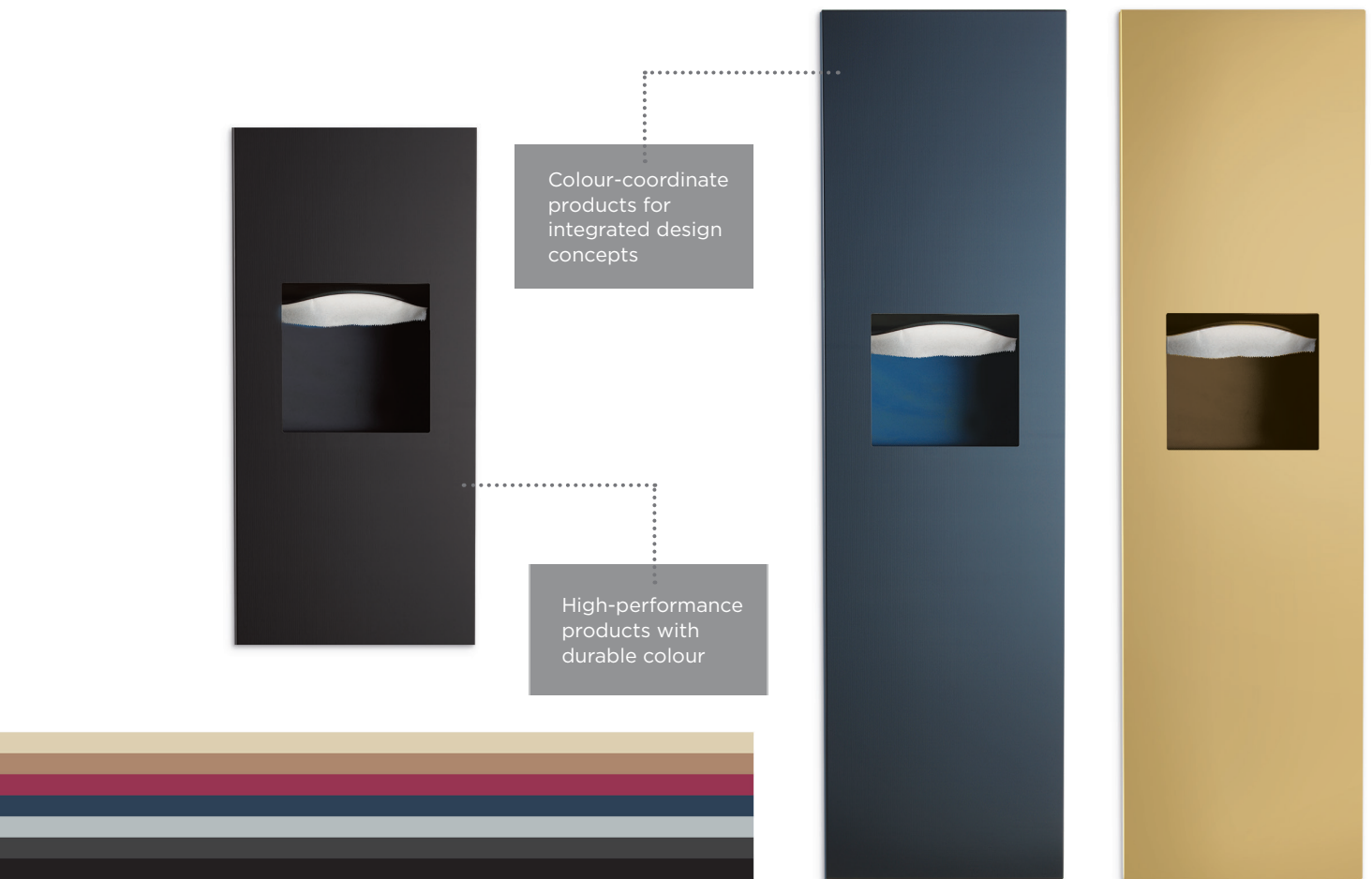
**Polished Nickel**  
Soap Dispenser: B-856



**Brushed Nickel**  
Soap Dispenser: B-855



**Matte Black**  
Soap Dispenser: B-852



## COLOUR-ENHANCED TRIMLINESERIES ACCESSORIES

### Bobrick Performance You Expect Now in Full Colour

Did you know that all Bobrick TrimLineSeries accessories can now be offered in colours? From paper towel dispensers to combination units to toilet compartment accessories, you will get the durability and performance you expect from TrimLineSeries and the vibrant colours you didn't expect. Different processes, such as Light Interference Colour (LIC), Plating and Powder Coating, are used to achieve a variety of exotic coloured accessories. Contact your local Bobrick representative for details.

### Features & Benefits

- **Create a Custom Look:** Select colour, finish and texture to match your design theme for a unique experience.
- **Durable Colour:** Finishes are just as bright and colourful as paint but more durable and more sustainable, without solvents and volatile organic compounds (VoCs).
- **Wide Product Selection:** Choose from dozens of products to coordinate colour and integrated design elements.



# THOUGHTFUL ACCOMMODATIONS



## B-3725 HANDS-IN RECESSED HAND DRYER

### No Mess. Low Profile.

It's like it's not even there. The Accessible Recessed Hand Dryer features slim, minimalistic design that satisfies accessibility requirements—and it prevents water splashing and puddles for a more hygienic restroom. Patented.

Oversized, absorbent drying alcove minimises water splashing

B-3725



KB200-SS Patented

Sleek design matches modern décor, harmonising with other satin-finish accessories

## STAINLESS STEEL NAPPY CHANGING STATIONS

### An Industry Icon, Now in Stainless Steel

The Koala favourites designers have relied on for decades are now available in various recessed, horizontal and vertical stainless steel models.



Saves energy, paper and space while increasing convenience and comfort.

## B-38030 TOWEL DISPENSER, HAND DRYER, WASTE BIN

### Economical, Sustainable and Compliant

Reduces towel usage, energy use and waste while providing a fast, comfortable hand dry. Built-in TowelMate™ and 900-watt high-performance hand dryer for reduced energy consumption and waste. Patented.

B-38030



B-549

Available in satin, bright polished and matte black finishes.

## CUBICLE COLLECTION

### Convenience Inside the Cubicle

Hooks, shelves, spare tissue roll holders and toilet brush holders with coordinated elements add elegant accommodation to any washroom.





[Bobrick.com](http://Bobrick.com)      [Bobrick.la](http://Bobrick.la)      [Bobrick.de](http://Bobrick.de)

	<a href="http://Bobrick.com">Bobrick.com</a>	<a href="http://Bobrick.la">Bobrick.la</a>	<a href="http://Bobrick.de">Bobrick.de</a>
<b>Corporate</b>	+1.818.764.1000		<a href="mailto:international@bobrick.com">international@bobrick.com</a>
<b>Europe</b>	+44 (0)20 8366 1771		<a href="mailto:euoffice@bobrick.com">euoffice@bobrick.com</a>
<b>UK</b>	+44 (0)20 8366 1771		<a href="mailto:info@bobrick.co.uk">info@bobrick.co.uk</a>
<b>Germany</b>	0800.79.00.456		<a href="mailto:euoffice@bobrick.com">euoffice@bobrick.com</a>
<b>Spain</b>	+34 609 791 484		<a href="mailto:euoffice@bobrick.com">euoffice@bobrick.com</a>
<b>Latin America</b>	+1.954.755.8934		<a href="mailto:international@bobrick.com">international@bobrick.com</a>
<b>Middle East</b>	+1.971 (50) 1747386		<a href="mailto:infomea@bobrick.com">infomea@bobrick.com</a>
<b>Australia</b>	1800.353158		<a href="mailto:international@bobrick.com">international@bobrick.com</a>
<b>Asia</b>	+1.971 (50) 1747386		<a href="mailto:infomea@bobrick.com">infomea@bobrick.com</a>

Colours are printed reproductions and are for descriptive purposes only. Refer to manufacturer's samples for absolute colour fidelity. Colour guides and samples are available from Bobrick on request. **For product warranty information, please visit [bobrick.com](http://bobrick.com).**